

N.E. 1/4 OF SEC. 13, T.6N., R.1E., & PART OF SEC. 18, T.6N., R.2E., S.L.B. & M.

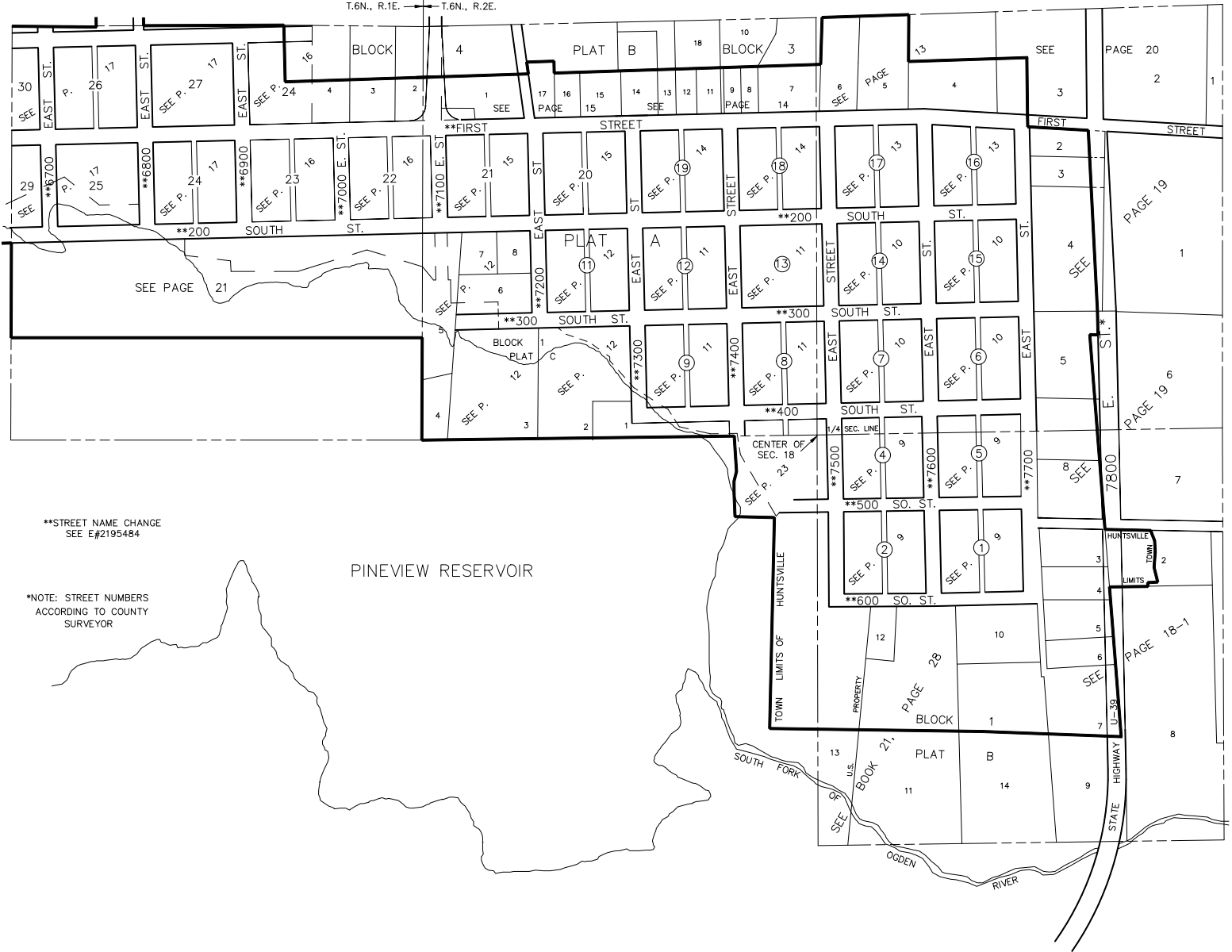
HUNTSVILLE SURVEY KEY MAP OF PLATS A, B & C

SCALE 1" = 500'

SEE BOOK 20, PAGE 10

SEE BOOK 21, PAGE 8

SEE BOOK 21, PAGE 7



**STREET NAME CHANGE
SEE E#2195484

*NOTE: STREET NUMBERS
ACCORDING TO COUNTY
SURVEYOR

PINEVIEW RESERVOIR

SEE BOOK 21, PAGE 30